

Rural Proofing for Health Toolkit

**Jointly commissioned and funded by the
National Centre for Rural Health & Care and Rural England CIC**

Toolkit launch, 9th December 2020

Brian Wilson

What is the Toolkit?

A tool to help local organisations or partnerships in the health and care sector to address the needs of their rural populations when they are developing policies and service delivery plans.

To manage rural challenges which can affect both service users and providers:

- Distance from services
- Lost economies of scale
- Downtime and costs
- Infrastructure gaps



Whilst realising rural opportunities

Who is the Toolkit aimed at?

Those responsible for planning and designing health and care strategies and service delivery plans at the local level.

These may be: commissioners; providers; or other partnership bodies.

Also for non-statutory bodies that represent service users or engage with the health and care sector.

Examples:

- Sustainability & Transformation Partnerships
- Integrated Care System partners
- Clinical Commissioning Groups
- Primary Care Networks
- Child & Adolescent Mental Health Service Teams
- Public Health Directorates
- Adult Social Care Directorates
- Local Healthwatch providers

Further reasons to rural proof



Rural proofing can help to:

- Optimise service outcomes
- Achieve equitable benefits
- Assist locality-based approaches
- Design out unintended gaps in service provision
- Identify opportunities to innovate
- Support good practice in policy making

Structure of the Toolkit

Its six main themes:

- 1. Main hospital services**
- 2. Primary and community health services**
- 3. Mental health services**
- 4. Public health and preventative services**
- 5. Social care services**
- 6. Workforce**

Plus cross-cutting themes:

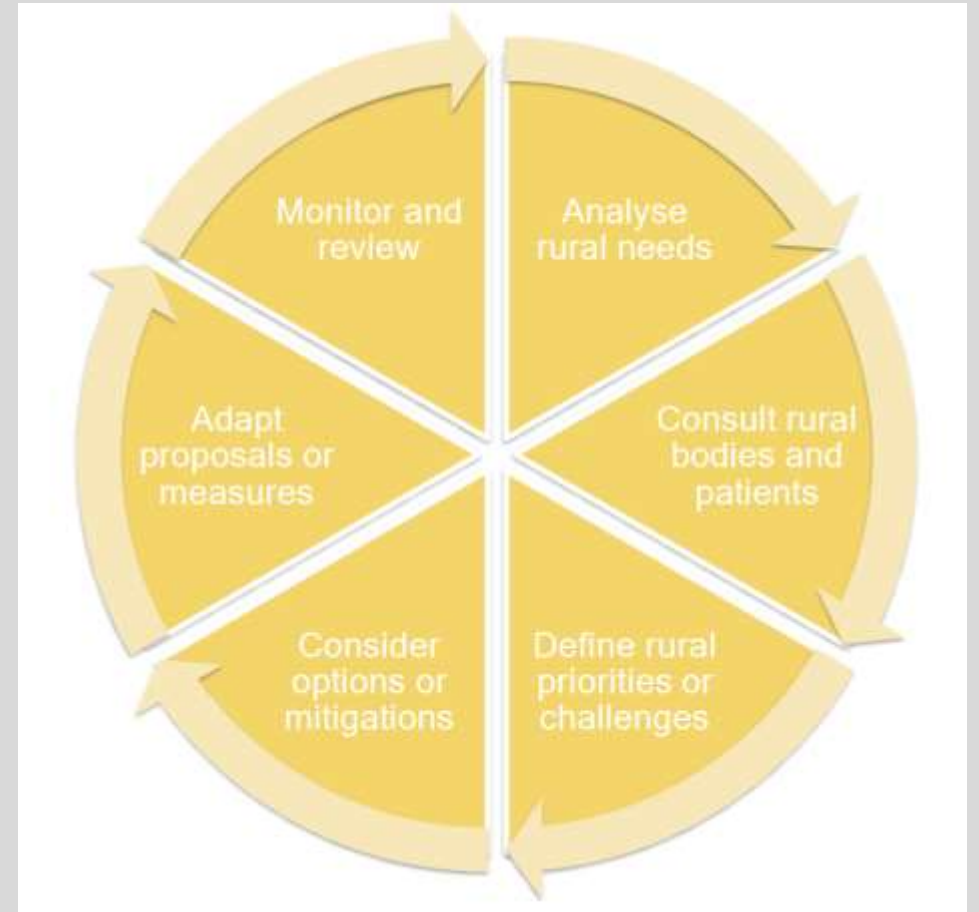
- Accessibility and transport*
- IT and digital*
- Role of the voluntary and community sector*
- Patient and public involvement*
- Collaboration and service integration*
- Health inequalities and data*
- Estates*

How should the Toolkit be used?

There is no single way: its use should fit with and be integral to each strategy or plan making process.

However, we recommend:

- Starting early in that process
- Using throughout that process
- Drawing on local rural evidence
- Monitoring subsequently



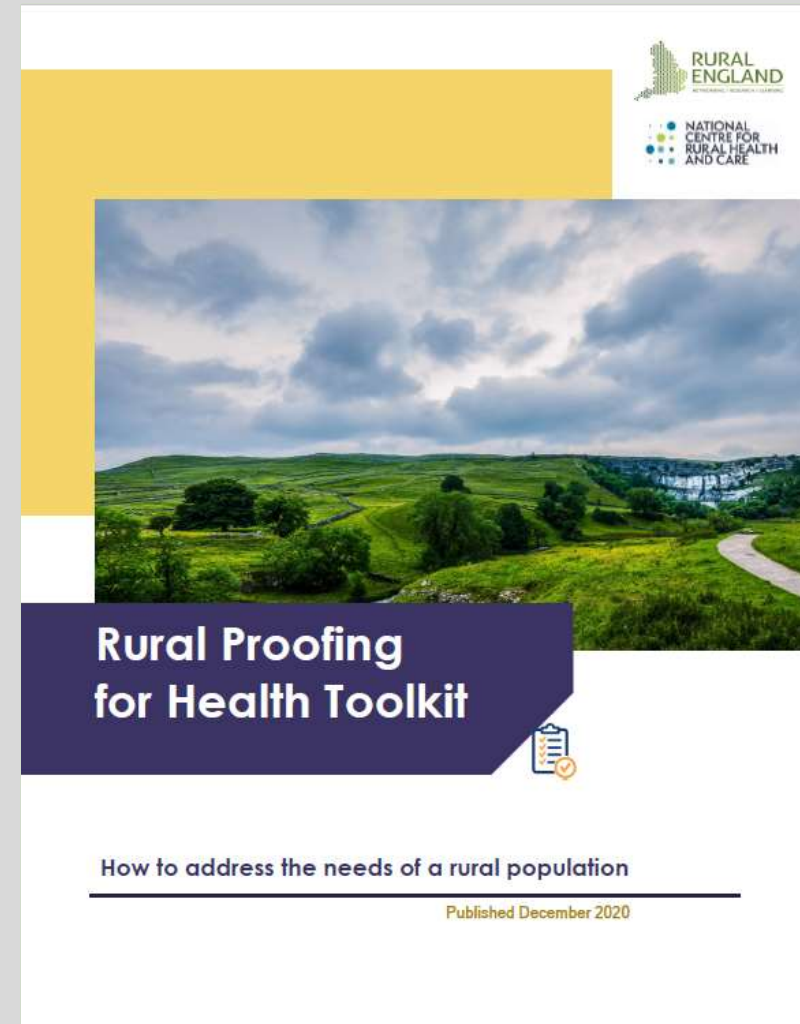
The Rural Proofing for Health Toolkit is an e-book, accessible from either the NCRHC or the Rural England CIC website.

Rural England CIC

<https://ruralengland.org/rural-proofing-for-health-toolkit/>

National Centre for Rural Health & Care

<https://www.ncrhc.org/news>



Q&A



Main project team:

Brian Wilson (Rural England CIC)

Jane Hart (Rural England CIC)

Billy Palmer (Nuffield Trust)

Sonja Rewhorn (independent)

*With further expert advice from
the health and care sector given
by the Project Reference Group*